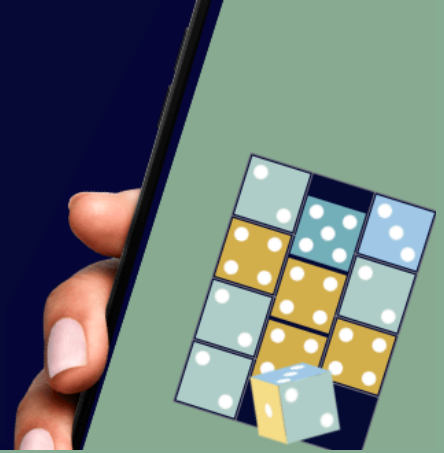


LOGIQ

Match the dice - solve the puzzle



LOGIQ

Press release

LOGIQ is a clever puzzle for smart people. To succeed in this puzzling brain-game you will need to use analytical thinking combined with a creative mind-set. Not surprisingly, LOGIQ is not for everyone

SIMPLE GAMEPLAY

The basic gameplay is connecting dice of equal value. Without altering the basic elements, the game slowly progresses from simple stages into more complex challenges. The result is a game with continuous variation and a tight gameplay.

Clever

- Brain stimulating
- Progressive challenges
- Unique levels - every time!

Simple

- Easy rules: match the dice, solve the puzzle
- At least one solution (no dead-ends)
- Intuitive exploration

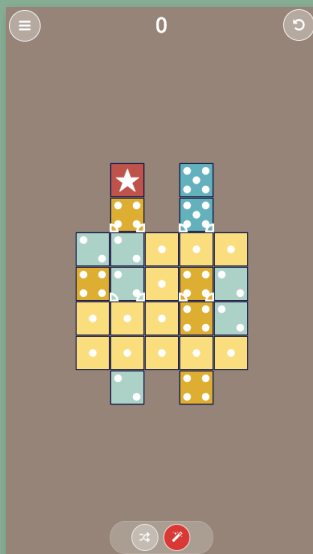
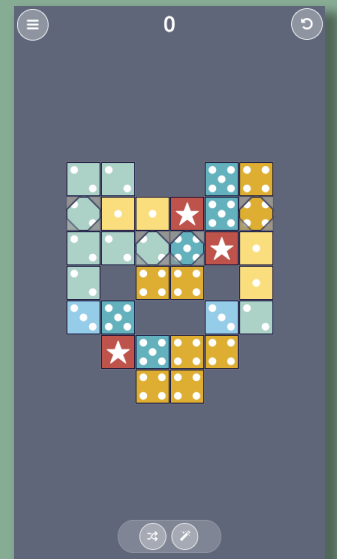
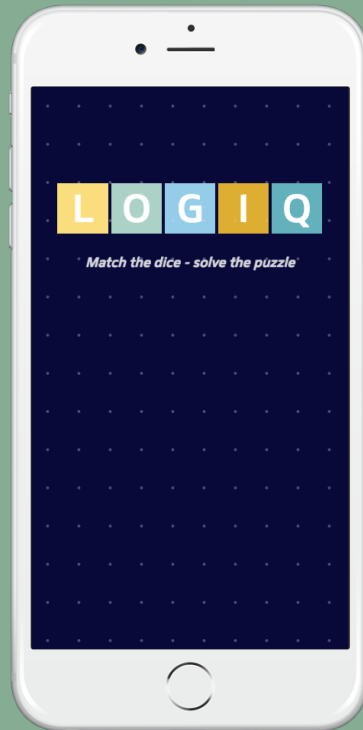
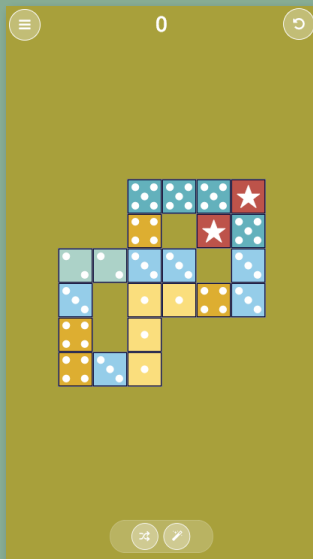
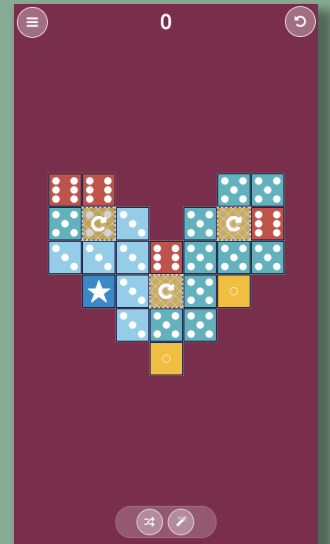
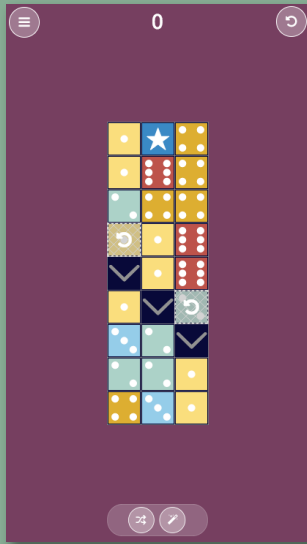
PROOF OF CONCEPT

The driving force behind the genesis of LOGIQ: simple rules, clever thinking and guaranteed solutions. This formula seems to resonate very well with every 4th person on the planet. A month-long test-run on Social Media showed 26% of all downloads opened the app. more than 10 times! What's more is the *average playing time was more than 14 minutes!* LOGIQ might not be for everyone, but it sure is for someone.

DOWNLOAD FOR FREE

The company behind LOGIQ is called Puzzled & Co. It is a Scandinavian game studio focused solely on generating fun brain puzzles with good old analytical fun. If you want to try LOGIQ or learn more about the game please visit: <https://puzzled.dk/logiq/>





It's LOGIQ when you think about it

